


SMOKE ALARMS

HARDWIRED OR BATTERY POWERED



 10 Year battery **OR** 240V hardwired

 Stand-alone alarm **OR** Interconnected system

 Ceiling **OR** wall mount

 **Optional** radio frequency



HYBRID SMOKE ALARM

THE ALL-IN-ONE SMOKE ALARM FOR EVERY INSTALLATION SCENARIO

Finally, one smoke alarm that can be hardwired, battery-powered, interconnected or stand-alone – no need to purchase separate alarms for different installs.

The built-in 10-year battery can be the primary power source or the backup power source when installed using the 240V hardwired option.

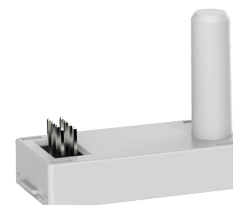
Use emerald's Hybrid Smoke Alarm as a stand-alone alarm or interconnected - either wirelessly with the addition of the RF module (sold separately) or hardwired connection.

The alarm is fitted with a test/hush button to facilitate testing of the alarm. The hush function also allows the alarm and alarm system to be silenced in the case of a triggered alarm.

Network RF compatibility with the Vulcan 240V, Ranger RF and the emerald Smoke Alarm Controller.

FEATURES

- 240V hardwired or 10YR battery powered
- RF interconnection with optional RF module
- Australian Patent Application No. 2021900417
- CSIRO ActivFire listed
- Meets Australian smoke alarm standards (AS3786:2014)
- 10 year warranty



OPTIONAL RF Module
Model: EP-HYB-RF-MOD

SPECIFICATIONS

MODEL NUMBER	EP-HYB-240-10
OPTIONAL RF MODULE	EP-VC-RF-MOD
NORMAL OPERATING & STORAGE TEMPERATURE	0° to 40°
DIMENSIONS	140x45mm
WEIGHT	255.4g 262.8g with RF module
BATTERY	EVE CR17450
WARRANTY	10 Years
WIRELESS DISTANCE	>20m (100m outside)

POWER	DC 3V 10yr rated Lithium ion battery (non-replaceable) OR 220-240V AC 50-60Hz with 3V battery backup (non-replaceable battery)
SENSOR	Photoelectric optical chamber
ALARM VOLUME	>85dB(A) @ 3m
INTERCONNECT	Radio Frequency (RF) enabled connection via RF module (sold separately) with up to 40 alarms on one wireless network. Harw wired interconnection up to 24 alarms.
NORMAL OPERATING & STORAGE HUMIDITY	15% to 95% relative humidity (non-condensing)
PACK INCLUDES	Screws and mounting plate
COMPATIBILITY	RF smoke alarm is compatible with - • Ranger and Vulcan RF smoke alarm modules • Self-compatible (i.e. additional units of the same model) • Smoke Alarm Controller

